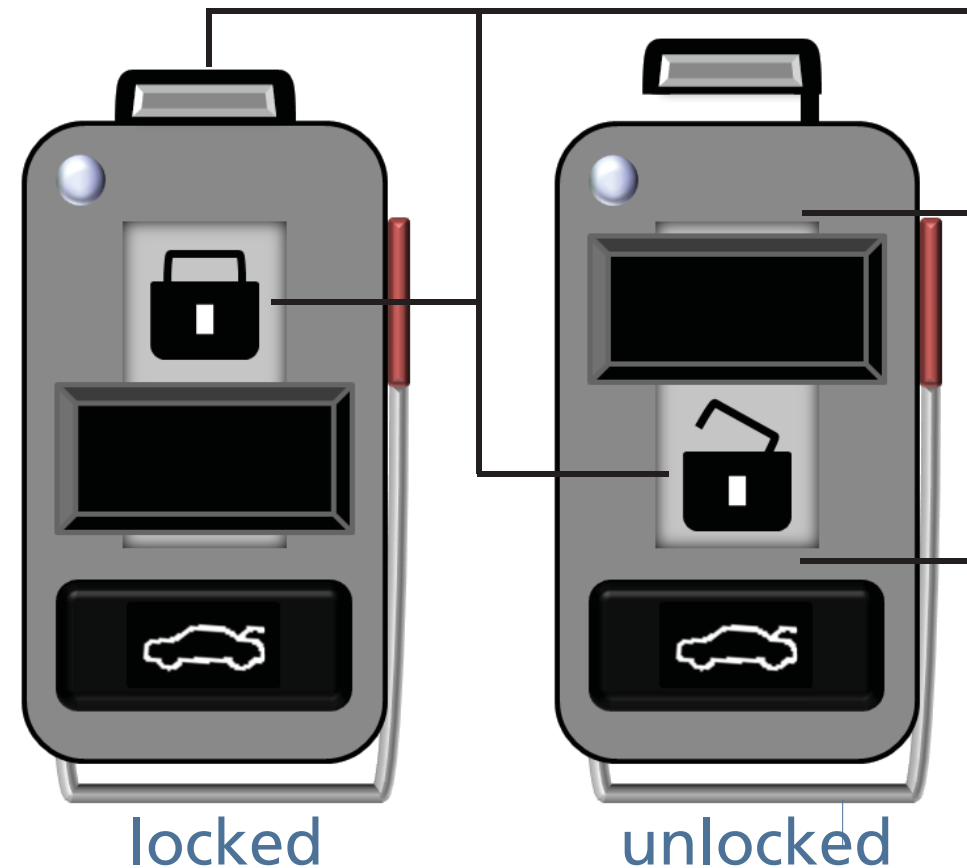


The Slide Vibe

A Vehicle Remote Control Redesign



The Solution



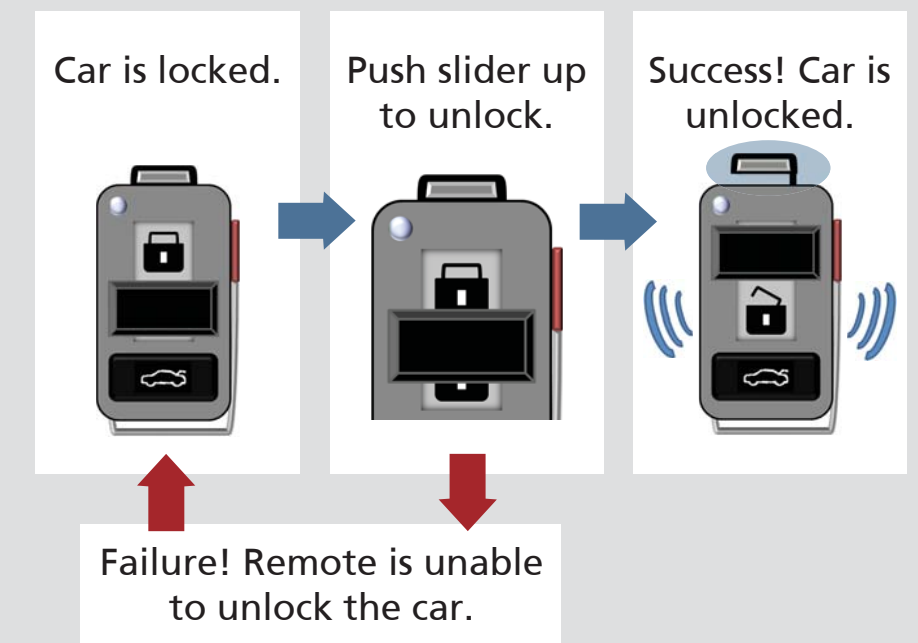
Physical indicator and visual lock icon reveal the state of the car.

Match between slider control and action of raising or lowering the lock.

Differentiation between the sliding up motion for unlock and down for lock.

Physical indicator and vibration feedback designate a change in state.

Inspirations



Current Design

No indication of the current state of the car.

Mismatch between the buttons for lock and unlock and the action of locking or unlocking a car.

No differentiation between the buttons for lock and unlock.

Inappropriate feedback when car beeps instead of control.